

## FOR LEASE

910 SHERWOOD DRIVE  
SUITE 22  
LAKE BLUFF, IL 60044

CONTACT US TODAY:

**Eric Wagener**

847-706-7155

ewagener@owenwagener.com

Owen Wagener & Co.

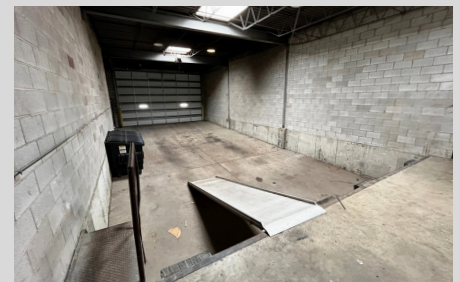
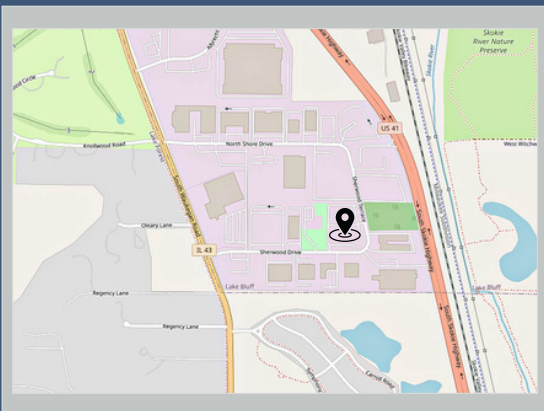
37 Sherwood Terrace

Suite 122

Lake Bluff, IL 60044

www.owenwagener.com

### SINGLE-STORY FLEX BUILDING



### SPECS:

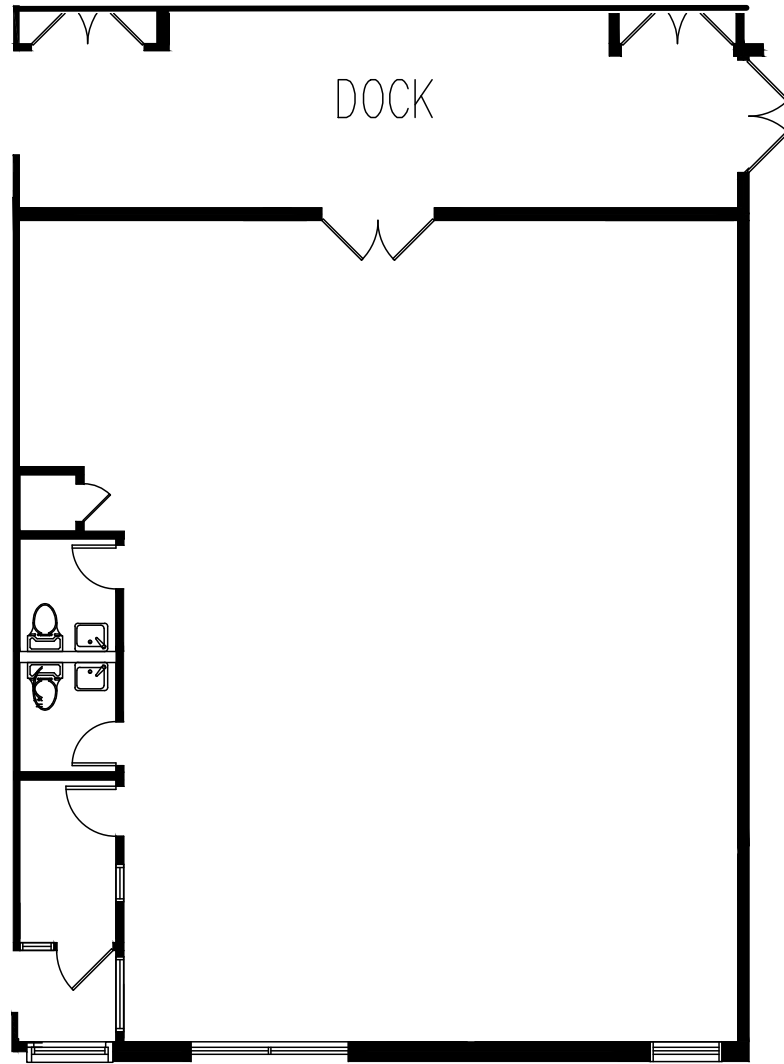
- GREAT NORTH SHORE LOCATION
- TWO DOCKS W/ WAREHOUSE SPACE
- MINUTES TO I-94 & RT. 41 INTERCHANGE
- EXCELLENT NATURAL LIGHT
- IMMEDIATE OCCUPANCY
- PROFESSIONALLY MANAGED & MAINTAINED

Space Available:	2,011 SF
Total Building Size:	18,198 SF
Description:	Premium Flex Space
Parking:	Ample
Year Built	1996
Heat:	Gas Forced Air & AC
Monthly Rent:	\$2,011.00 (\$12/SF) Modified Gross
Fully Air-Conditioned:	Yes
Loading:	Two (2) Docks
Ceiling Height:	12' Clear Height

All information herein is from sources reliable but not guaranteed accurate. Subject to errors, omissions, and to changes of price and terms, prior sale or lease, all without notice.

910 SHERWOOD DRIVE, SUITE 22  
LAKE BLUFF, IL 60044

2,011 SF



SUITE 22



YOUR CHICAGOLAND COMMERCIAL  
REAL ESTATE EXPERT, SINCE 1964.

[WWW.OWENWAGENER.COM](http://WWW.OWENWAGENER.COM)