

# FOR LEASE

910 SHERWOOD DRIVE  
SUITE 21-22  
LAKE BLUFF, IL 60044

CONTACT US TODAY:

**Eric Wagener**

847-706-7155

ewagener@owenwagener.com

Owen Wagener & Co.

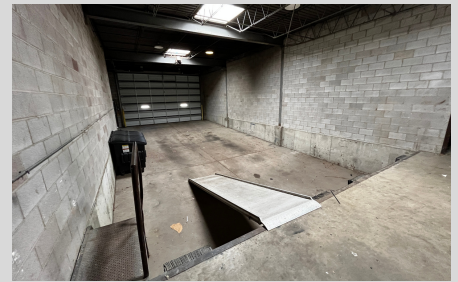
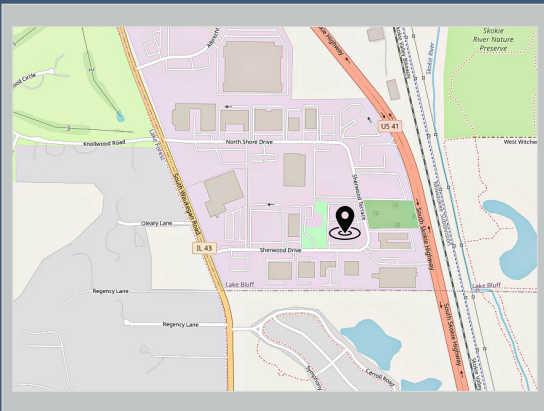
37 Sherwood Terrace

Suite 122

Lake Bluff, IL 60044

www.owenwagener.com

## SINGLE-STORY FLEX BUILDING



## SPECS:

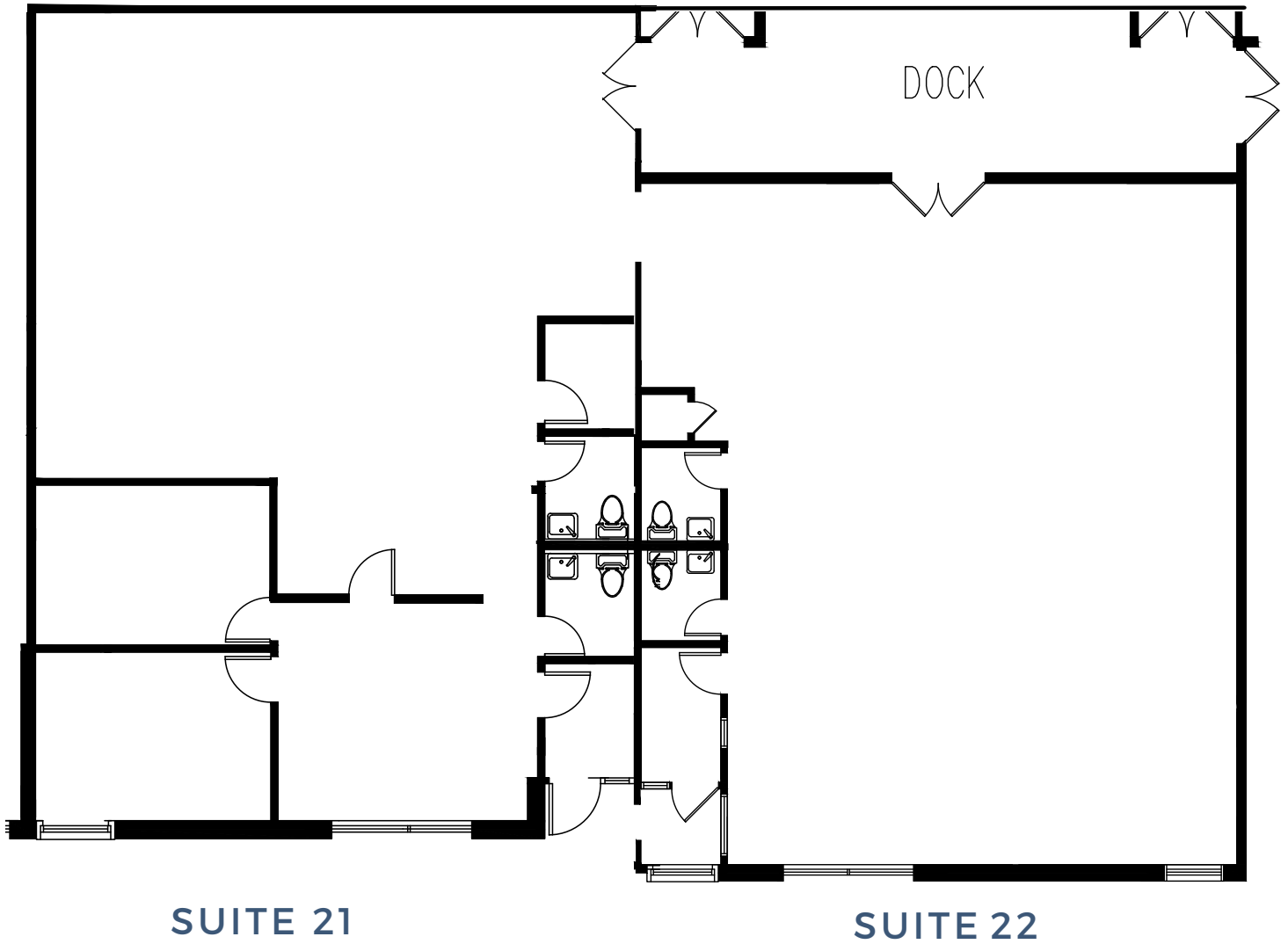
- GREAT NORTH SHORE LOCATION
- TWO DOCKS W/ WAREHOUSE SPACE
- MINUTES TO I-94 & RT. 41 INTERCHANGE
- EXCELLENT NATURAL LIGHT
- IMMEDIATE OCCUPANCY
- PROFESSIONALLY MANAGED & MAINTAINED

Space Available:	<b>3,984 SF</b>
Total Building Size:	<b>18,198 SF</b>
Description:	<b>Premium Flex Space</b>
Parking:	<b>Ample</b>
Year Built	<b>1996</b>
Heat:	<b>Gas Forced Air &amp; AC</b>
Monthly Rent:	<b>\$3,984.00 (\$12/SF) Modified Gross</b>
Fully Air-Conditioned:	<b>Yes</b>
Loading:	<b>Two (2) Docks</b>
Ceiling Height:	<b>12' Clear Height</b>

All information herein is from sources reliable but not guaranteed accurate. Subject to errors, omissions, and to changes of price and terms, prior sale or lease, all without notice.

910 SHERWOOD DRIVE, SUITE 21-22  
LAKE BLUFF, IL 60044

3,984 SF



YOUR CHICAGOLAND COMMERCIAL  
REAL ESTATE EXPERT, SINCE 1964.