

FOR LEASE

37 SHERWOOD TERRACE, UNIT 112
LAKE BLUFF, IL

CONTACT US TODAY:

Eric Wagener

847-706-7155

ewagener@owenwagener.com

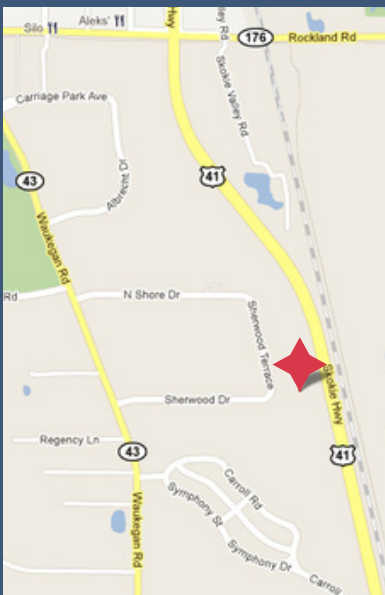
Owen Wagener & Co.

941 N. Plum Grove Rd., Suite B

Schaumburg, IL 60173

www.owenwagener.com

MULTI-TENANT OFFICE



SPECS:

- GREAT NORTH SHORE LOCATION
- CORNER SUITE WITH EXCELLENT WINDOW LINE
- NEW PAINT W/ CUSTOM FLOORING ALLOWANCE
- 7 PRIVATE OFFICES WITH CONFERENCE ROOM
- LARGE KITCHEN AND BREAKROOM
- PROFESSIONALLY MANAGED & MAINTAINED

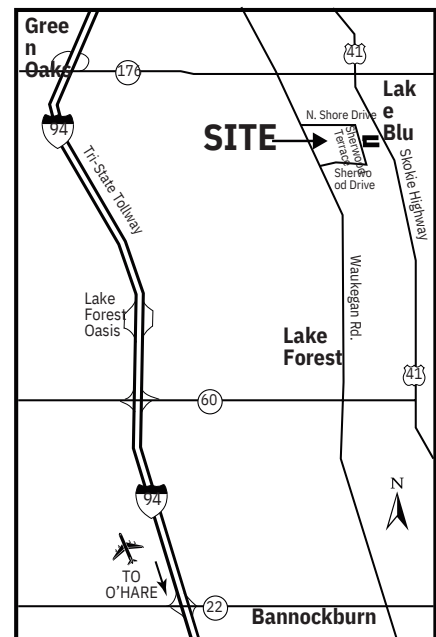
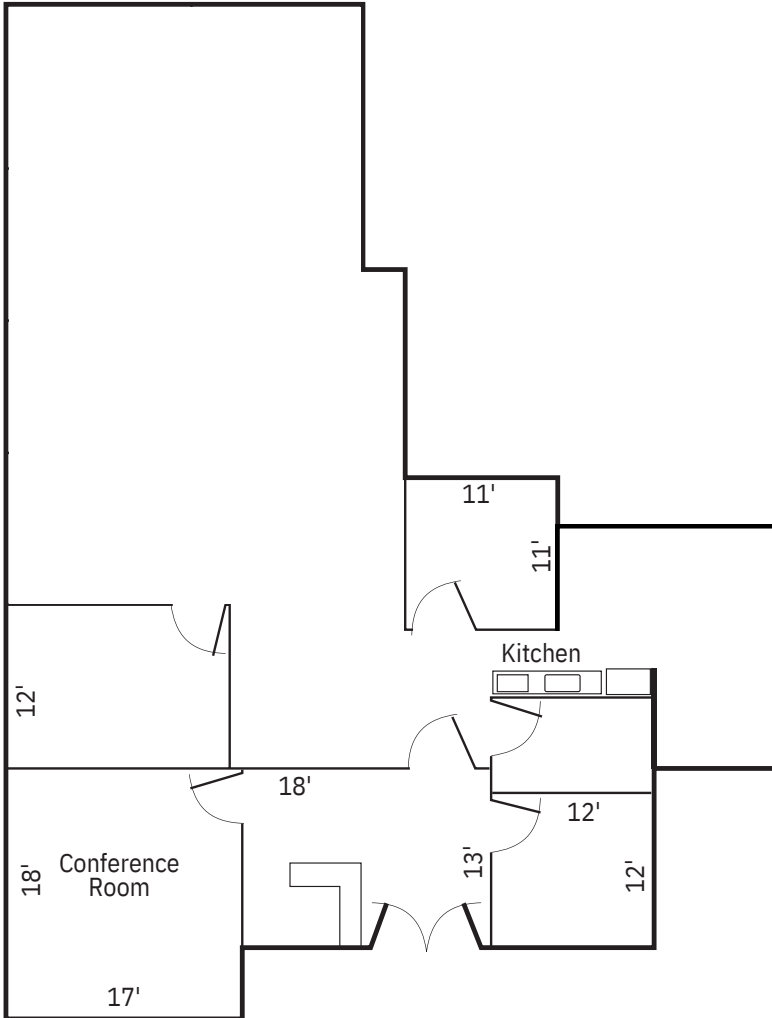
Space Available:	3,500 SF
Total Building Size:	35,458 SF
Acres:	2.59 Acres
Description:	Multi-Tenant Office
Parking:	Ample
Common:	Shared Lobby w/ Two Washrooms
Year Built:	1988
Zoning:	Flex
Monthly Rent:	\$3,500.00 Modified Gross

* Included up to 2022 estimates. Tenant participates in increase in tax & operating expenses in excess of 2022 estimates, if any.

Members of this firm have an ownership interest in property

All information herein is from sources reliable but not guaranteed accurate. Subject to errors, omissions, and to changes of price and terms, prior sale or lease, all without notice.

37 SHERWOOD TERRACE-UNIT 112
LAKE BLUFF, IL
3,500 SQUARE FEET



YOUR CHICAGOLAND COMMERCIAL
REAL ESTATE EXPERT, SINCE 1964.