



FOR LEASE

9745 INDUSTRIAL DRIVE, UNIT 5-6
BRIDGEVIEW, IL

CONTACT US TODAY:

Andrea Hauger

847-706-7153

ahauger@owenwagener.com

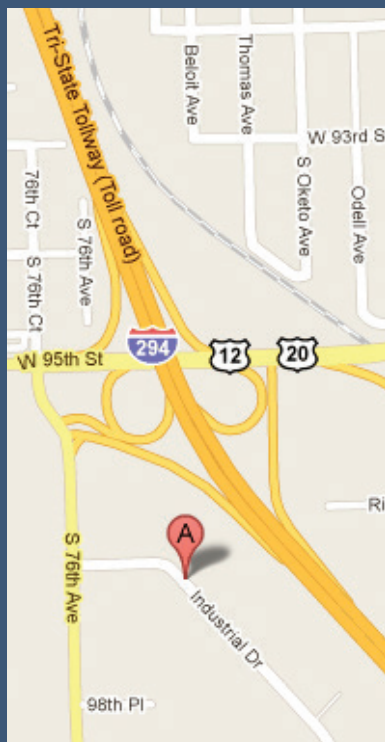
Owen Wagener & Co.

941 N. Plum Grove Rd., Suite B

Schaumburg, IL 60173

www.owenwagener.com

MULTI-TENANT INDUSTRIAL



SPECS:

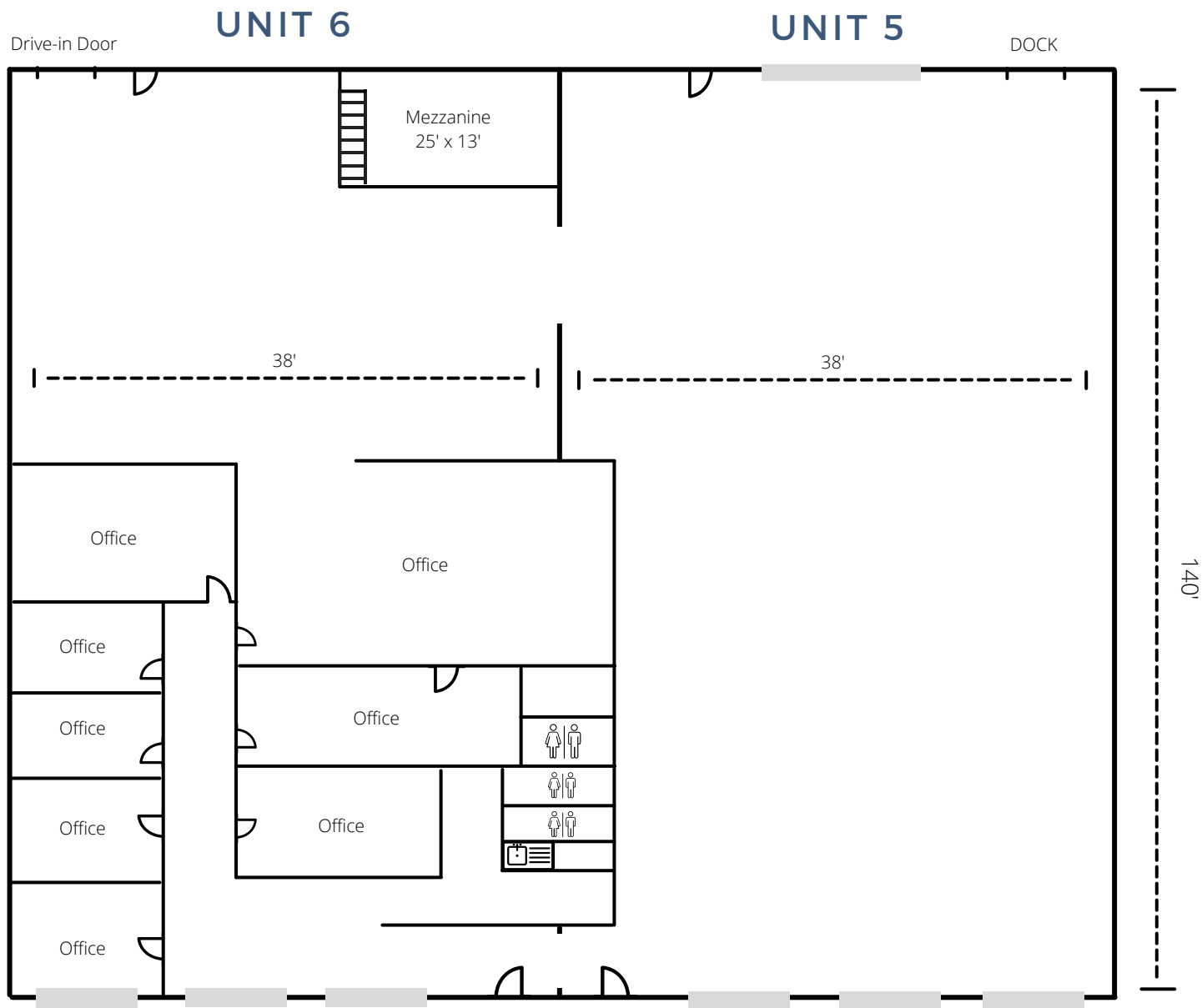
- AVAILABLE JULY 1ST
- QUICK ACCESS TO I-294/95TH ST
- FULLY SPRINKLERED
- FUNCTIONAL OFFICE LAYOUT
- DISTRIBUTION & LIGHT MANUFACTURING

Space Available:	10,640 SF
Total Building Size:	53,900 SF
Land Area:	22,573 SF
Description:	Industrial
Year Built	1978
Ceiling Height:	16'
Power:	200 Amp
Loading:	Drive-in Door & Exterior Truck Dock
Zoning:	I-2
Sprinklered:	Yes
Taxes:	\$2.87/SF
Monthly Rate:	\$8,867.00 (\$10/SF) Modified Gross

All information herein is from sources reliable but not guaranteed accurate. Subject to errors, omissions, and to changes of price and terms, prior sale or lease, all without notice.

9745 INDUSTRIAL DRIVE, UNIT 5-6
BRIDGEVIEW, IL

10,640 SF



YOUR CHICAGOLAND COMMERCIAL
REAL ESTATE EXPERT, SINCE 1964.