



COMMERCIAL REAL ESTATE  
SPECIALIST



# FOR LEASE

37 SHERWOOD TERRACE - UNIT 112  
LAKE BLUFF, IL

CONTACT US TODAY:

**Eric Wagener**

847-706-7155

ewagener@owenwagener.com

Owen Wagener & Co.

941 N. Plum Grove Rd., Suite B

Schaumburg, IL 60173

www.owenwagener.com

## MULTI-TENANT OFFICE



### SPECS:

- GREAT NORTH SHORE LOCATION
- CORNER SUITE WITH EXCELLENT WINDOW LINE
- 7 PRIVATE OFFICES WITH CONFERENCE ROOM
- LARGE KITCHEN AND BREAKROOM
- PROFESSIONALLY MANAGED & MAINTAINED

<b>Space Available:</b>	<b>3,500 SF</b>
<b>Total Building Size:</b>	<b>35,458 SF</b>
<b>Office Size:</b>	<b>357 SF</b>
<b>Acres:</b>	<b>2.59 Acres</b>
<b>Description:</b>	<b>Office Suite</b>
<b>Heat:</b>	<b>Gas Forced Air</b>
<b>Parking:</b>	<b>Ample</b>
<b>Common Area:</b>	<b>Shared Lobby with two washrooms</b>
<b>Year Built:</b>	<b>1988</b>
<b>Monthly Rent:</b>	<b>\$4,100.00 Modified Gross</b>

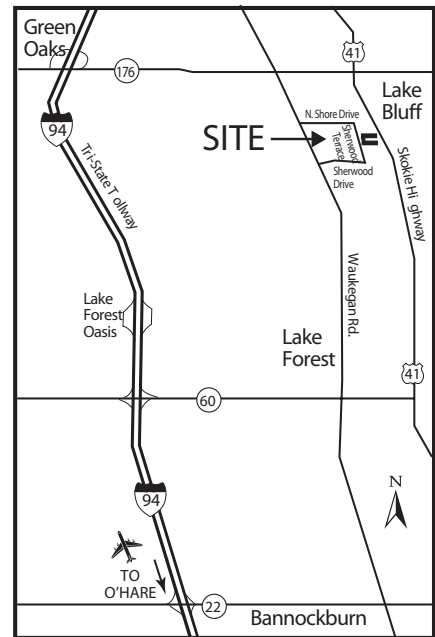
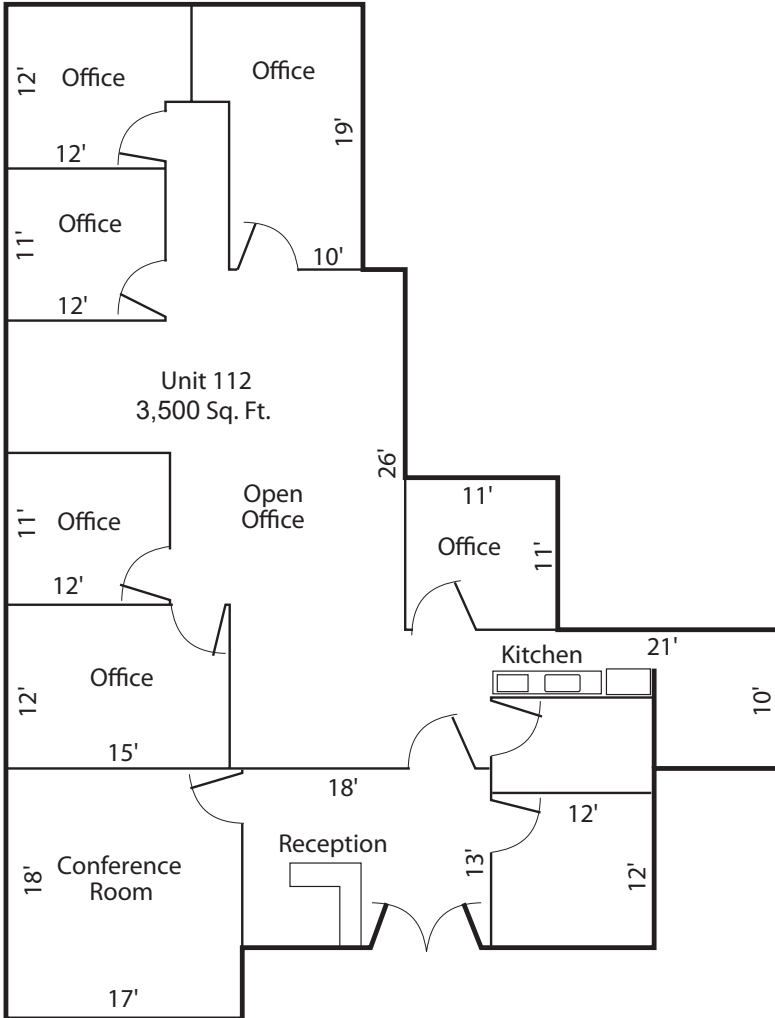
\* Included up to 2022 estimates. Tenant participates in increase in tax & operating expenses in excess of 2022 estimates, if any.

Members of this firm have an ownership interest in property

All information herein is from sources reliable but not guaranteed accurate. Subject to errors, omissions, and to changes of price and terms, prior sale or lease, all without notice.

# 37 SHERWOOD TERRACE - UNIT 112 LAKE BLUFF, IL

3,500 SQUARE FEET



YOUR CHICAGOLAND COMMERCIAL  
REAL ESTATE EXPERT, SINCE 1964.