

FOR LEASE

910 SHERWOOD DRIVE
SUITE 21
LAKE BLUFF, IL 60044

CONTACT US TODAY:

Eric Wagener

847-706-7155

ewagener@owenwagener.com

Owen Wagener & Co.

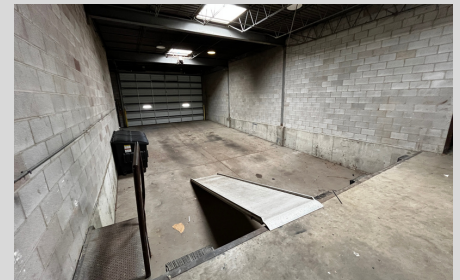
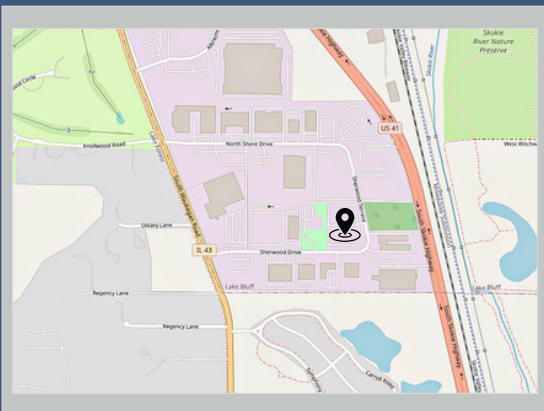
37 Sherwood Terrace

Suite 122

Lake Bluff, IL 60044

www.owenwagener.com

SINGLE-STORY FLEX BUILDING



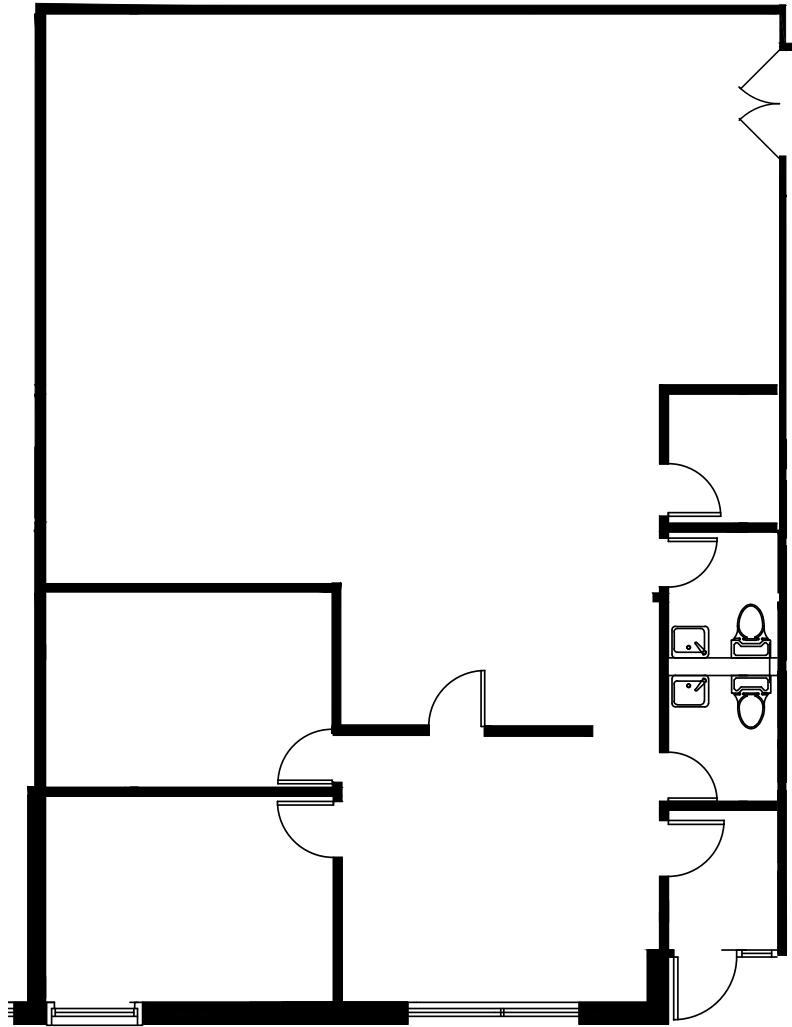
SPECS:

- GREAT NORTH SHORE LOCATION
- TWO DOCKS W/ WAREHOUSE SPACE
- MINUTES TO I-94 & RT. 41 INTERCHANGE
- EXCELLENT NATURAL LIGHT
- IMMEDIATE OCCUPANCY
- PROFESSIONALLY MANAGED & MAINTAINED

| | |
|------------------------|--|
| Space Available: | 1,973 SF |
| Total Building Size: | 18,198 SF |
| Description: | Premium Flex Space |
| Parking: | Ample |
| Year Built | 1996 |
| Heat: | Gas Forced Air & AC |
| Monthly Rent: | \$1,973.00 (\$12/SF) Modified Gross |
| Fully Air-Conditioned: | Yes |
| Loading: | Two (2) Docks |
| Ceiling Height: | 12' Clear Height |

910 SHERWOOD DRIVE, SUITE 21
LAKE BLUFF, IL 60044

1,973 SF



SUITE 21



YOUR CHICAGOLAND COMMERCIAL
REAL ESTATE EXPERT, SINCE 1964.

WWW.OWENWAGENER.COM