



COMMERCIAL REAL ESTATE
SPECIALIST



FOR LEASE

37 SHERWOOD TERRACE - SUITE 102-103
LAKE BLUFF, IL

CONTACT US TODAY:

Eric Wagener

847-706-7155

ewagener@owenwagener.com

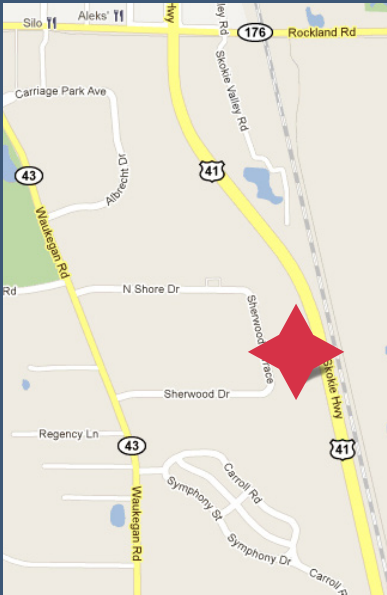
Owen Wagener & Co.

941 N. Plum Grove Rd., Suite B
Schaumburg, IL 60173

www.owenwagener.com



MULTI-TENANT FLEX SPACE



SPECS:

- GREAT NORTH SHORE LOCATION
- TWO DRIVE-IN DOORS W/ WAREHOUSE SPACE
- 5 PRIVATE OFFICES WITH KITCHEN
- ADDITIONAL MEZZANINE STORAGE
- PROFESSIONALLY MANAGED & MAINTAINED

| | |
|----------------------|---------------------------|
| Space Available: | 2,500 SF |
| Total Building Size: | 35,458 SF |
| Office Size: | 1,620 SF |
| Acres: | 2.59 Acres |
| Description: | Flex |
| Heat: | Gas Forced Air |
| Parking: | Ample |
| Loading: | Two Drive-in Doors |
| Year Built: | 1988 |
| Monthly Rent: | \$2,800.00 Modified Gross |

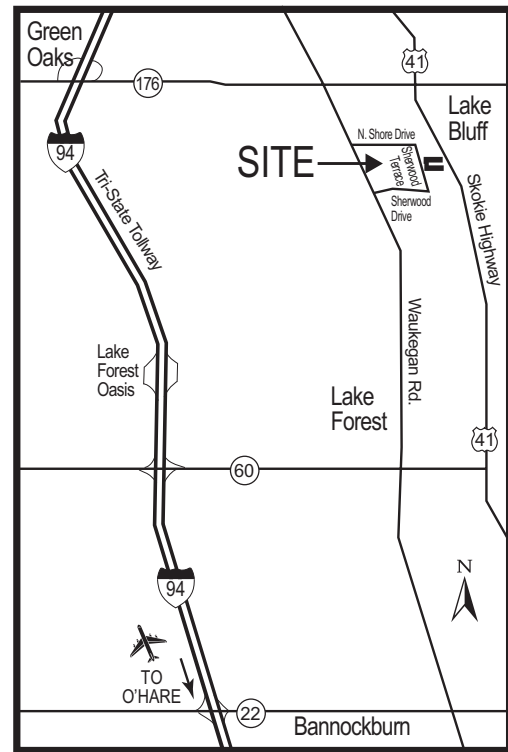
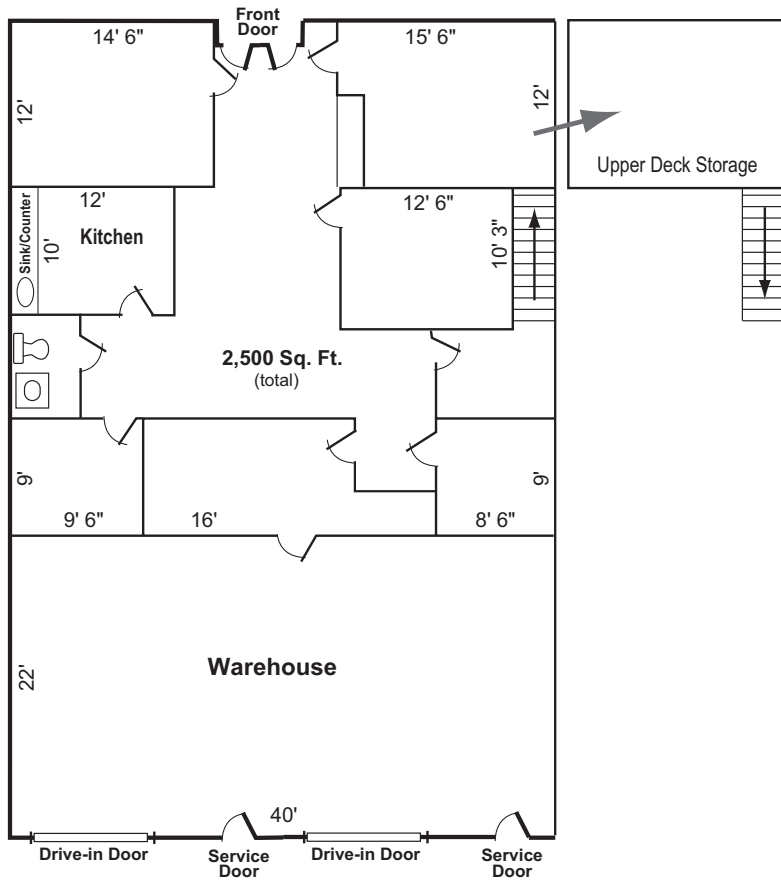
* Included up to 2022 estimates. Tenant participates in increase in tax & operating expenses in excess of 2022 estimates, if any.

Members of this firm have an ownership interest in property

All information herein is from sources reliable but not guaranteed accurate. Subject to errors, omissions, and to changes of price and terms, prior sale or lease, all without notice.

37 SHERWOOD TERRACE - UNIT 102-103 LAKE BLUFF, IL

2,500 SQUARE FEET



YOUR CHICAGOLAND COMMERCIAL
REAL ESTATE EXPERT, SINCE 1964.