

FOR LEASE

9745 INDUSTRIAL DRIVE, UNIT 3
BRIDGEVIEW, IL

CONTACT US TODAY:

Andrea Hauger

847-706-7153

ahauger@owenwagener.com

Owen Wagener & Co.

37 Sherwood Terrace

Suite 122

Lake Bluff, IL 60044

www.owenwagener.com

MULTI-TENANT INDUSTRIAL



SPECS:

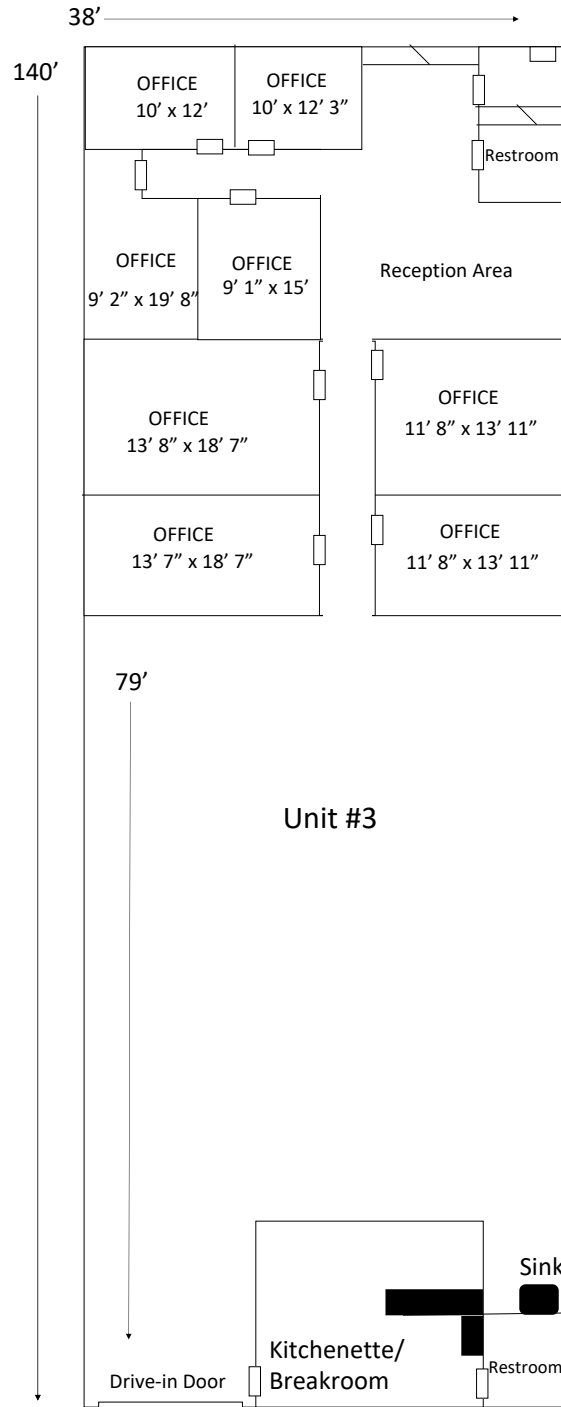
- 5,320 SF UNIT
- EMPLOYEE BREAKROOM
- 8 PRIVATE OFFICES
- OPEN AREA OR SHOWROOM
- STORAGE BUILD-OUT IN WAREHOUSE
- QUICK ACCESS TO I-294/95TH ST

Space Available:	5,320 SF
Total Building Size:	53,900 SF
Parking:	Ample
Description:	Industrial
Year Built	1978
Ceiling Height:	16'
Power:	200 Amp
Loading:	One Drive-in Door
Zoning:	I-2
Heat	Gas Forced Air
Sprinklered:	Yes
Monthly Rate:	Negotiable

All information herein is from sources reliable but not guaranteed accurate. Subject to errors, omissions, and to changes of price and terms, prior sale or lease, all without notice.

9745 INDUSTRIAL DRIVE, UNIT 3
BRIDGEVIEW, IL

5,320 SF



YOUR CHICAGOLAND COMMERCIAL
REAL ESTATE EXPERT, SINCE 1964.