

For more information contact:

**Andrea Hauger**  
**847-706-7153**

ahauger@owenwagener.com

**Owen Wagener & Co.**

955 N. Plum Grove Rd., Suite C  
Schaumburg, IL 60173  
www.owenwagener.com

**MULTI-TENANT  
INDUSTRIAL**



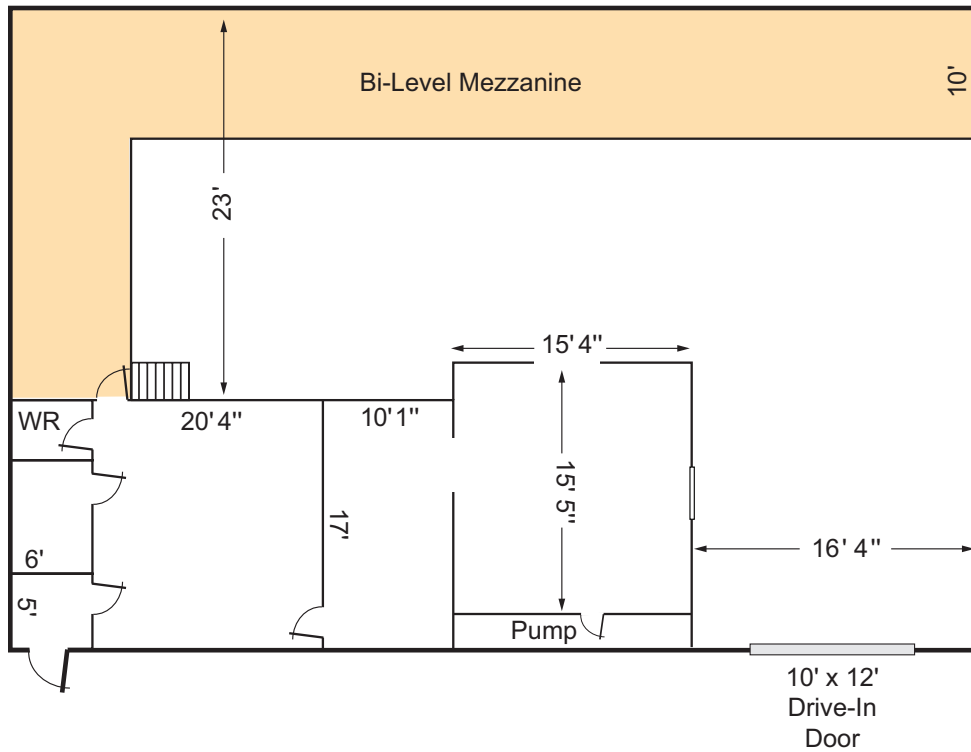
**9745 Industrial Drive, Unit 1A, Bridgeview, Illinois**

- 2,940 SF Unit Available
- 800 SF Office
- Two Private Offices and Reception Area
- One 10 x 12 Drive-In Door
- BI-Level Mezzanine Storage – An Additional 1,000 SF
- 16' Ceiling Height
- Gas Forced Air
- 5 Parking Spaces
- Sprinklered
- Frontage on Industrial Drive
- Just Off I-294/95th Street Exit
- Taxes \$2.59/SF



Available Unit	Size SF	Office SF	Lease Rate per Month	Loading
1A	2,940	800	\$2,450 Modified Gross (\$10/SF)	1 Drive-In Door (10'x 12')

9745 Industrial Drive, Unit 1A, Bridgeview, Illinois  
2,940 SF



9745 INDUSTRIAL DRIVE, BRIDGEVIEW, ILLINOIS

