

Willowbrook Court

683 Executive Drive ■ Willowbrook, Illinois

- 2 Private Offices with Open Area
- 1 Private Exterior Loading Dock
- Professionally Owned and Managed
- Excellent Location off Rt. 83 at I-55

Space Available:	3,980 SF
Office:	886 SF
Total Building Size:	84,330 SF
Description:	Single Story Flex
Parking:	2.5 per 1,000
Loading:	1 Dock
Zoning:	MI - Light Manufacturing
Ceiling Height:	16'
Heat:	Gas Forced Air
Year Built:	1979
Monthly Rent:	\$3,316.00 (\$10/SF)
Taxes & Operating Expenses:	Included up to 2018 Base Year*

*Tenant participates in increase in tax & operating expenses in excess of 2018 base year, if any.



Eric Wagener • ewagener@owenwagener.com • 847.706.7155

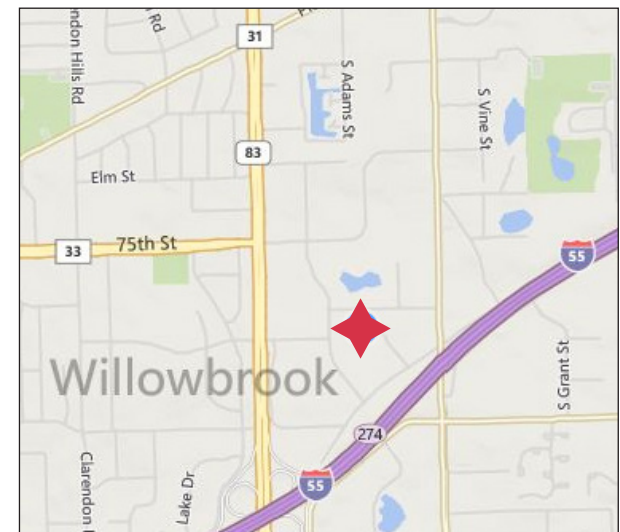
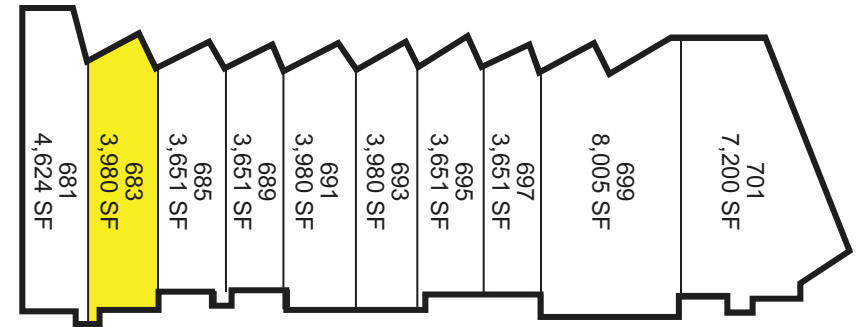
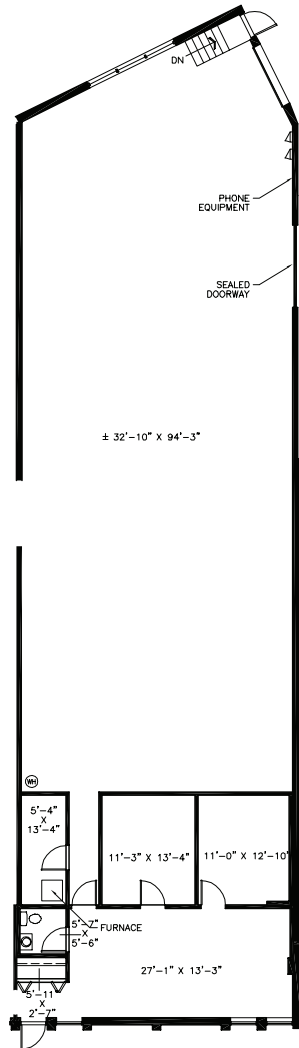


All information herein is from sources reliable but not guaranteed accurate. Subject to errors, omissions, and to changes of price and terms, prior sale or lease, all without notice.

FOR LEASE

Willowbrook Court

683 Executive Drive ■ Willowbrook, Illinois



OWEN
WAGENER
& CO.
"The Commercial Real Estate Specialist"
Since 1964